



SAINT PIERRE D'OLÉRON

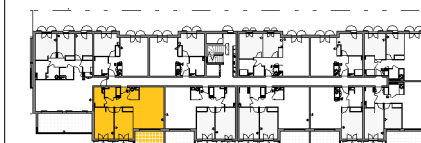
LE VÉLODROME

BÂT.	ETAGE	N° LOT	TYPE
B	R+1	B108	T3

Surface Habitable

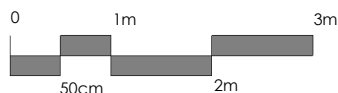
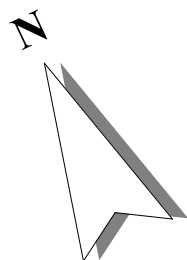
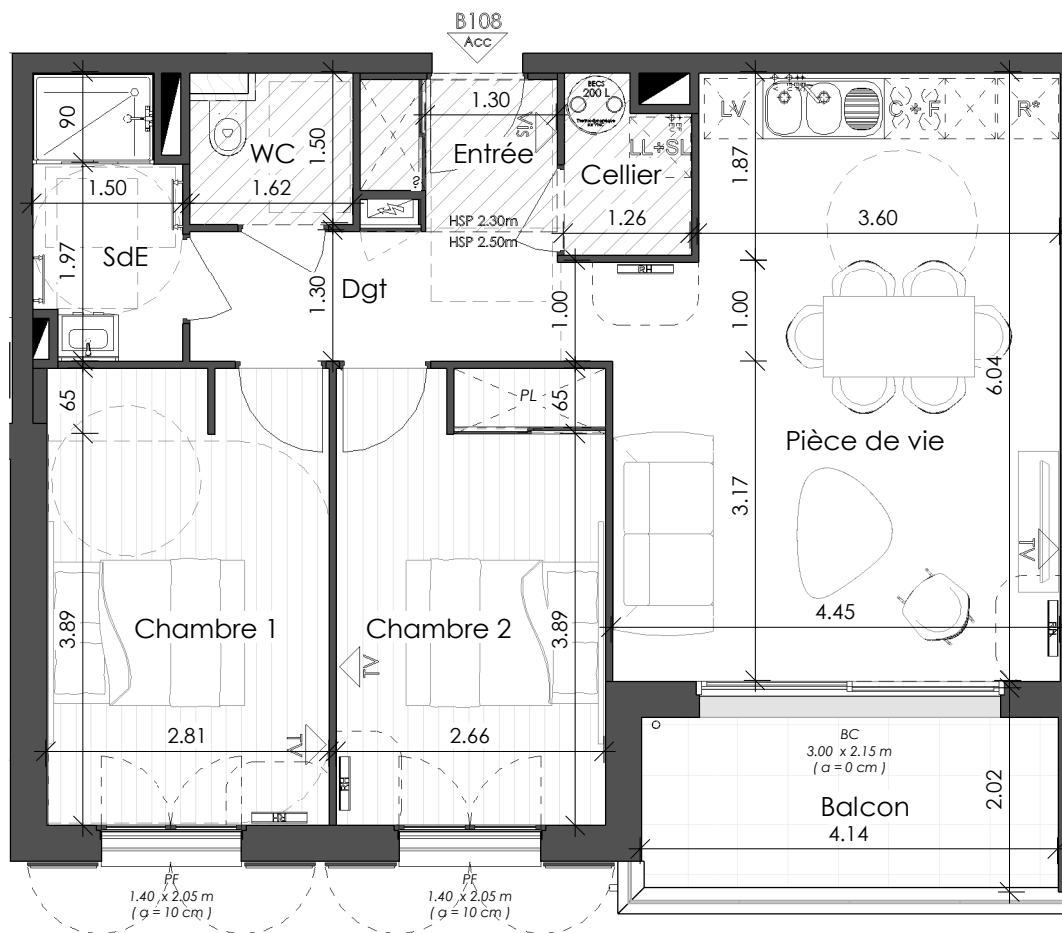
Entrée	2.63 m ²
Pièce de vie	25.78 m ²
Chambre 1	12.74 m ²
Chambre 2	12.03 m ²
Dgt	4.81 m ²
SdE	3.91 m ²
WC	2.42 m ²
Cellier	2.02 m ²
Total	66.34 m²

Balcon	8.06 m ²
--------	---------------------

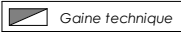
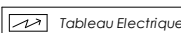


PLAN DE RÉSERVATION

Date : 06 Mai 2020 Indice : C



Plan du Logement (1 : 75)

F Fenêtre	LV Lave Vaisselle	R* Réfrigérateur	 Gaine technique
PF Porte fenêtre	LL Lave Linge	C-F Cuisson - Four	 Tableau Electrique
PE Porte d'entrée	SL Sèche Linge	PL Placard	CH Chaudière Gaz