



SAINT PIERRE D'OLÉRON

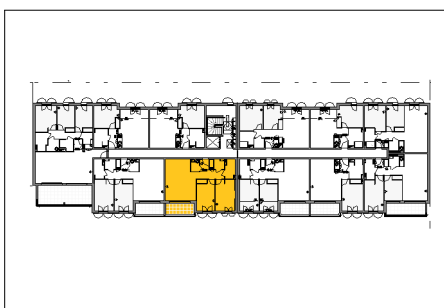
LE VÉLODROME

BÂT.	ETAGE	N° LOT	TYPE
B	R+2	B207	T3

Surface Habitable

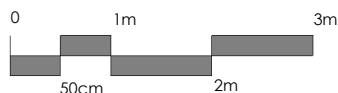
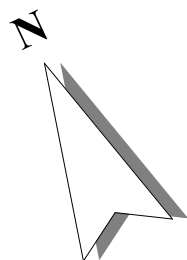
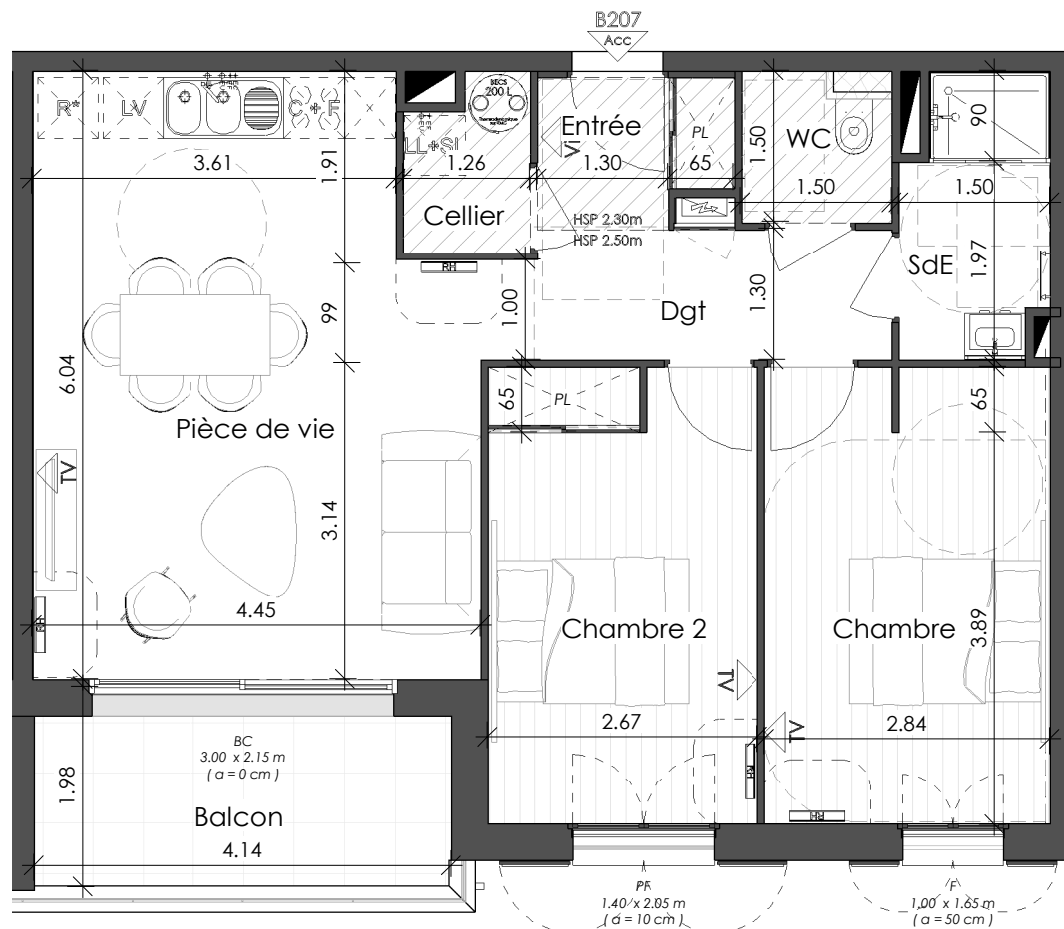
Entrée	2.63 m ²
Pièce de vie	25.84 m ²
Chambre 1	12.83 m ²
Chambre 2	12.10 m ²
Dgt	4.66 m ²
SdE	3.91 m ²
WC	2.25 m ²
Cellier	2.02 m ²
	66.24 m ²

Balcon	7.89 m ²
--------	---------------------

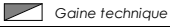
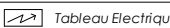


PLAN DE RÉSERVATION

Date : 06 Mai 2020 Indice : C



Plan du Logement (1 : 75)

F Fenêtre	LV Lave Vaisselle	R* Réfrigérateur	 Gaine technique
PF Porte fenêtre	LL Lave Linge	C-F Cuisson - Four	 Tableau Electrique
PE Porte d'entrée	SL Sèche Linge	PL Placard	CH Chaudière Gaz